
REVOIR | PARIS

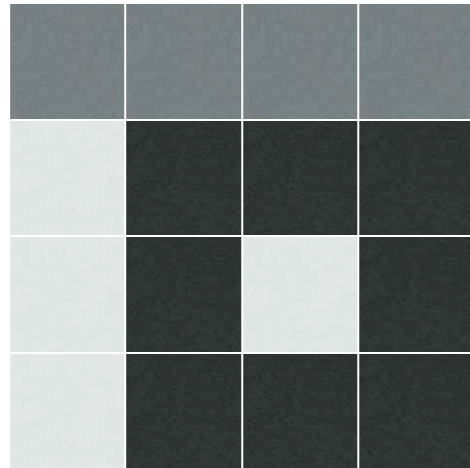
LAY

PATTERNS

BELGIAN

BRAND

| LAY PATTERN 002



VALENCIA



| 25%

ROME

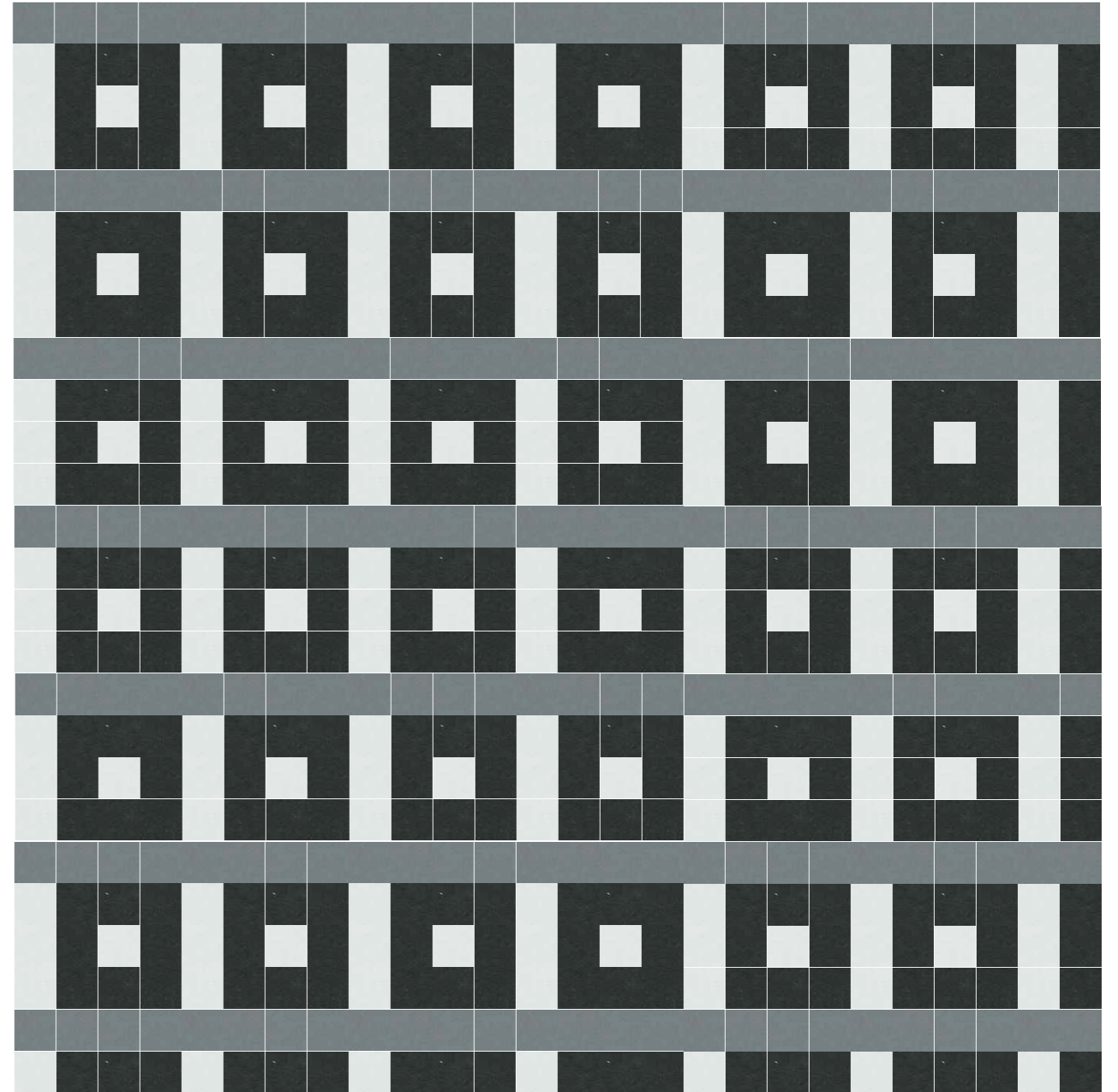


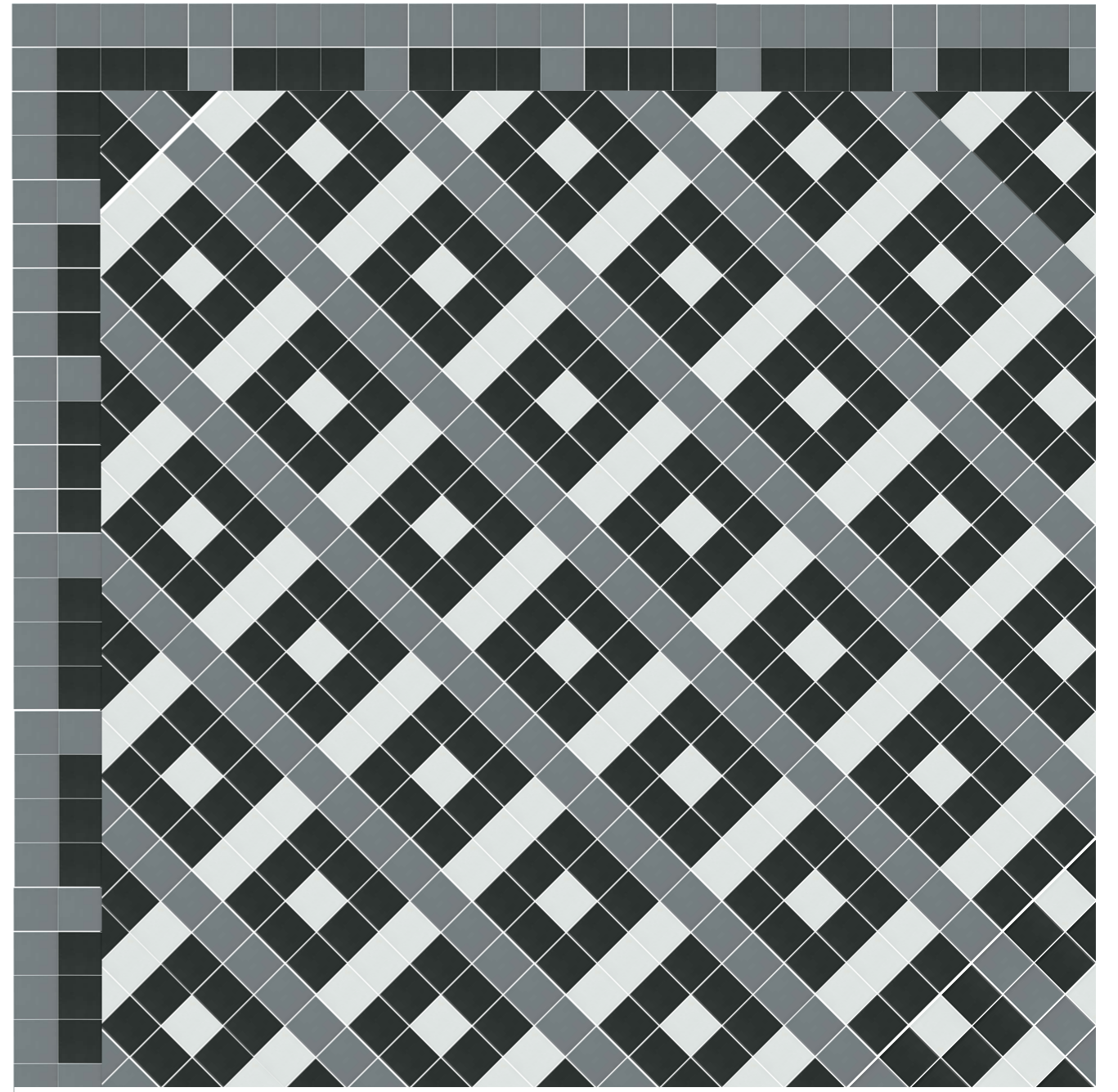
| 25%

PALERMO

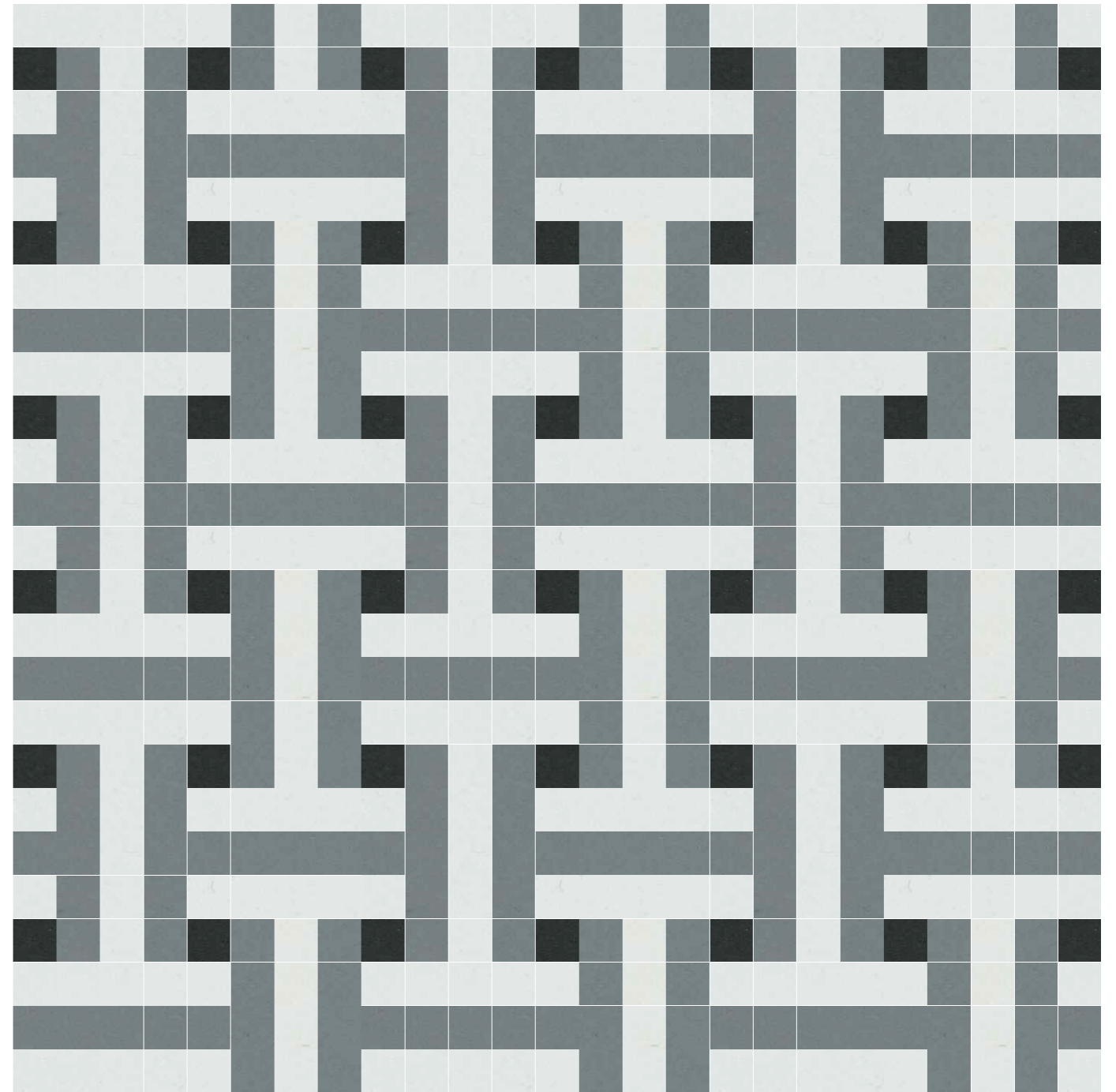
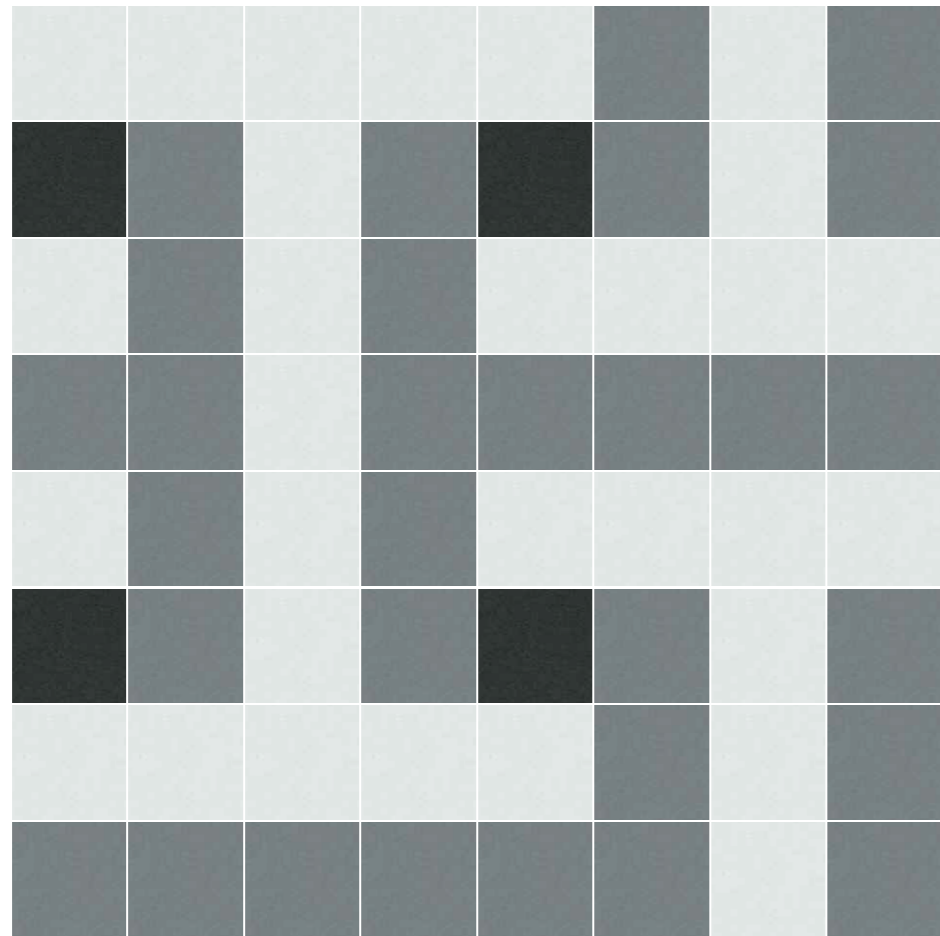


| 50%





| LAY PATTERN 003



VALENCIA

ROME

PALERMO

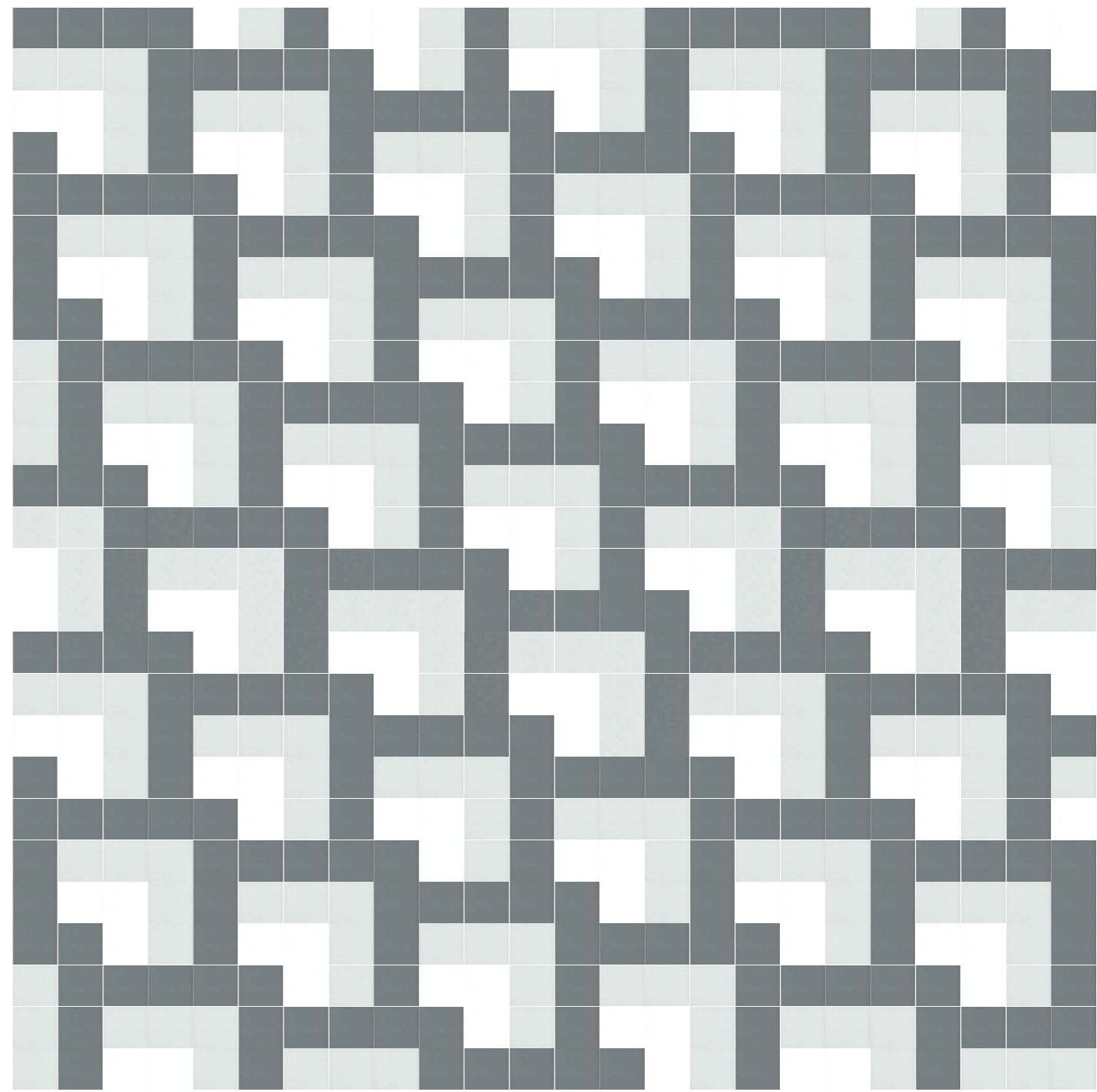
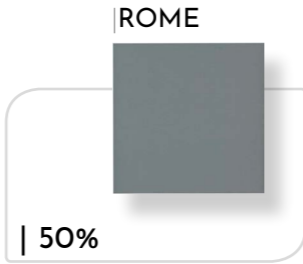
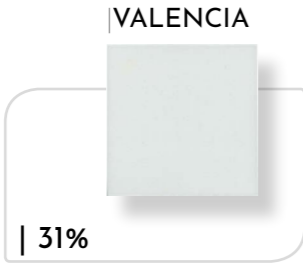
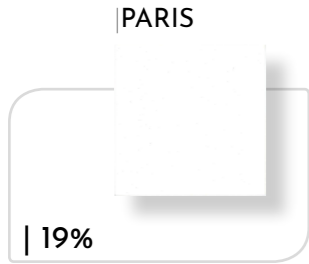
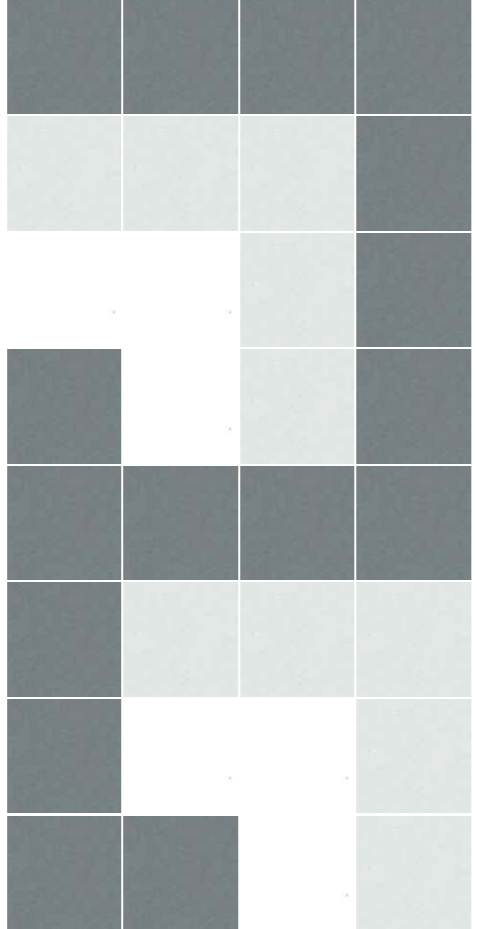


| 47%

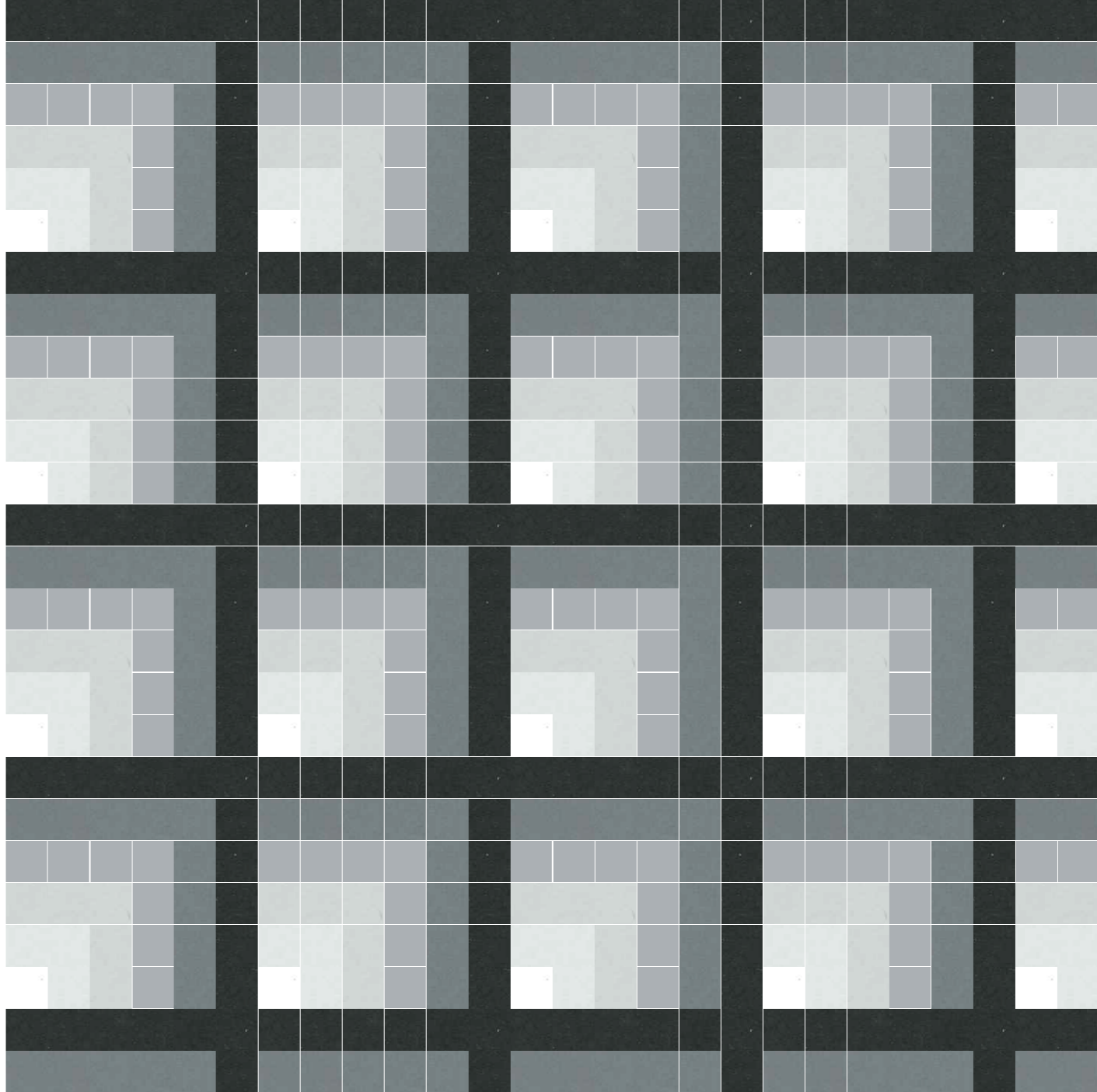
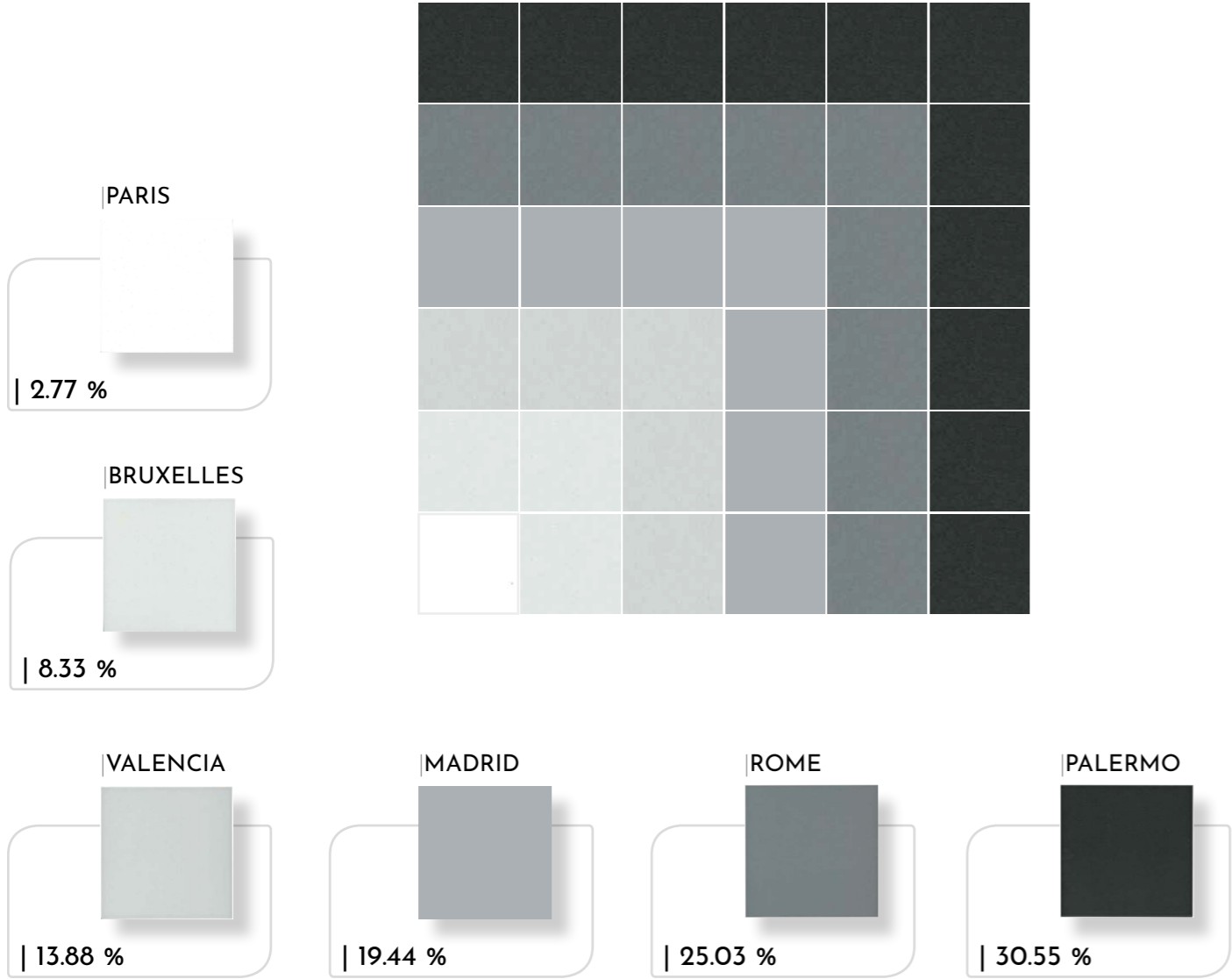
| 47%

| 6 %

| LAY PATTERN 004

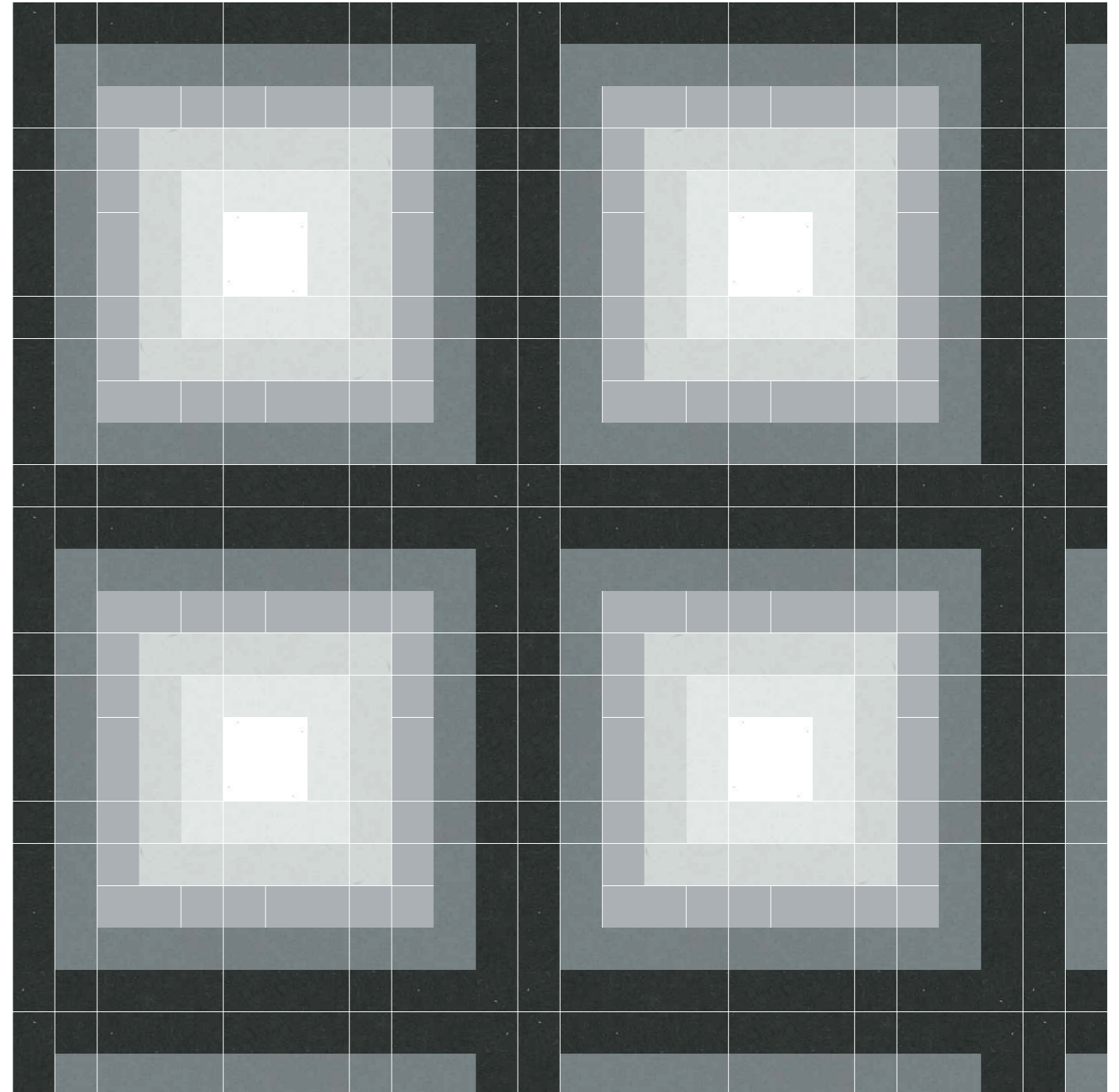
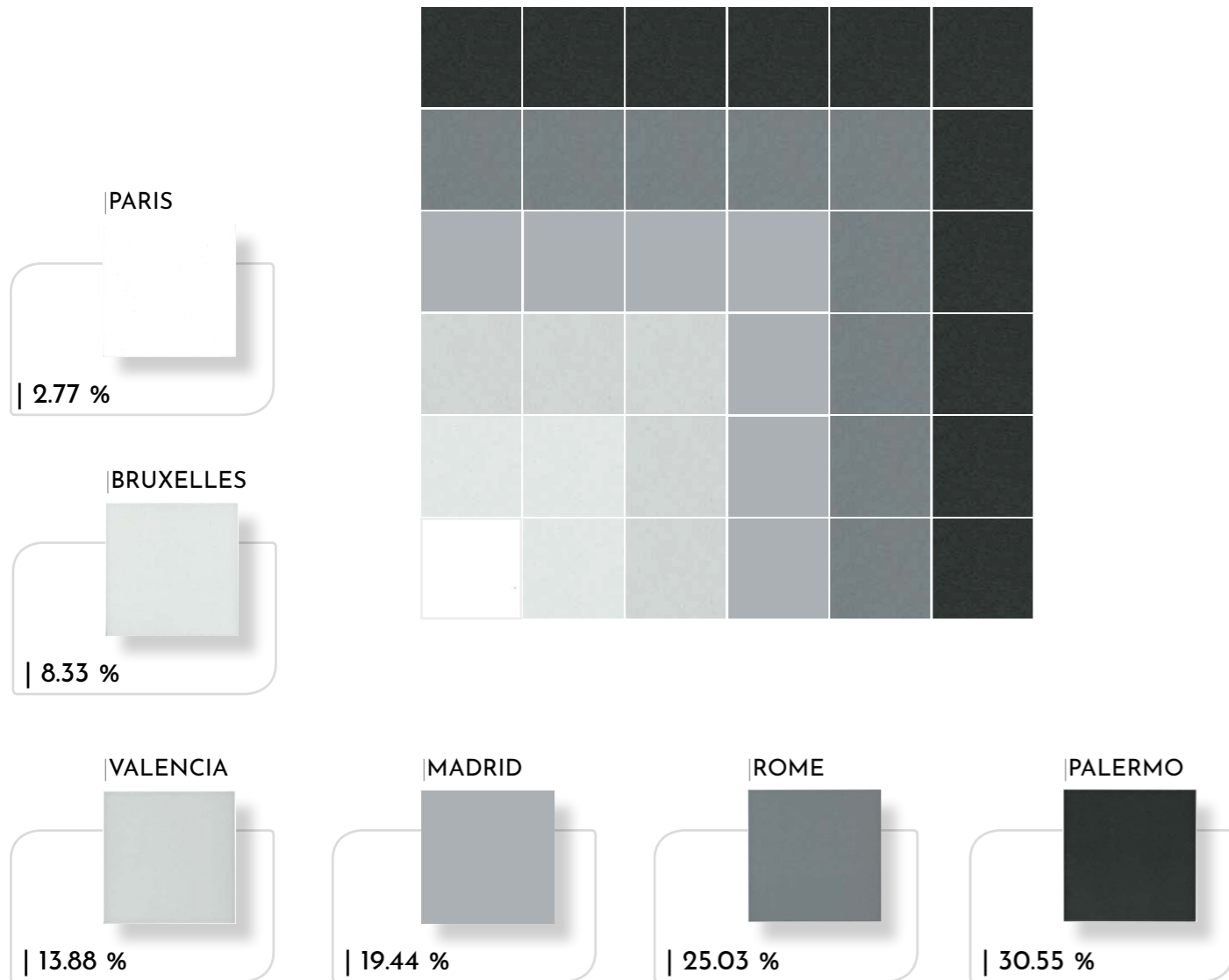


| LAY PATTERN 005

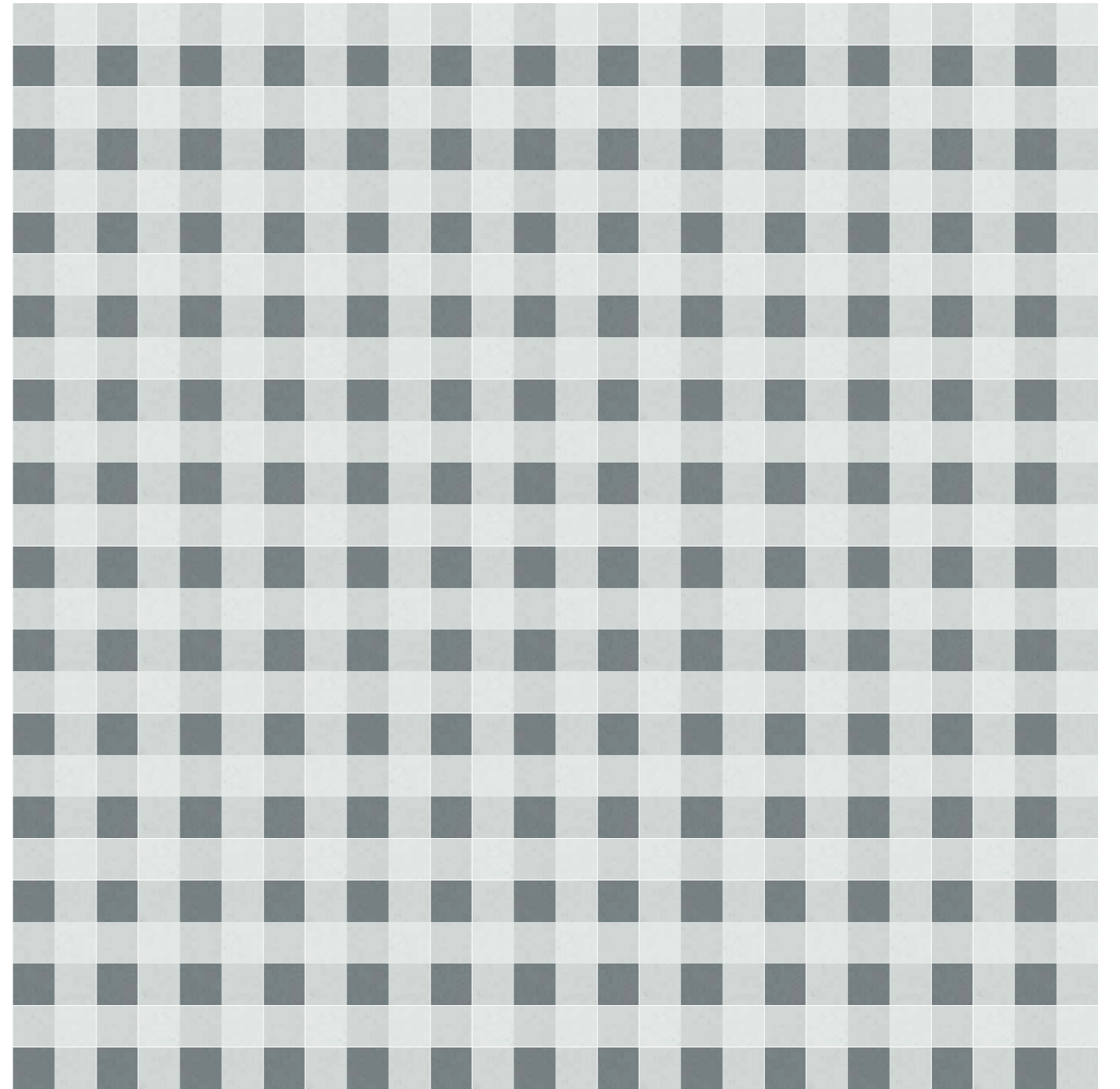
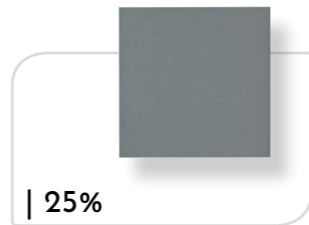
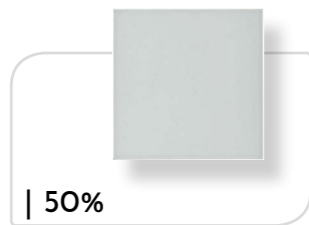
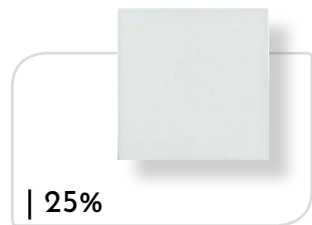
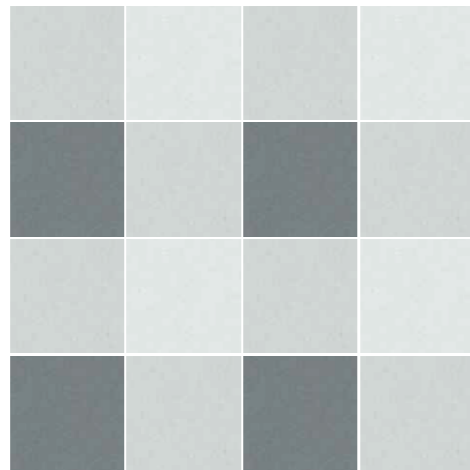




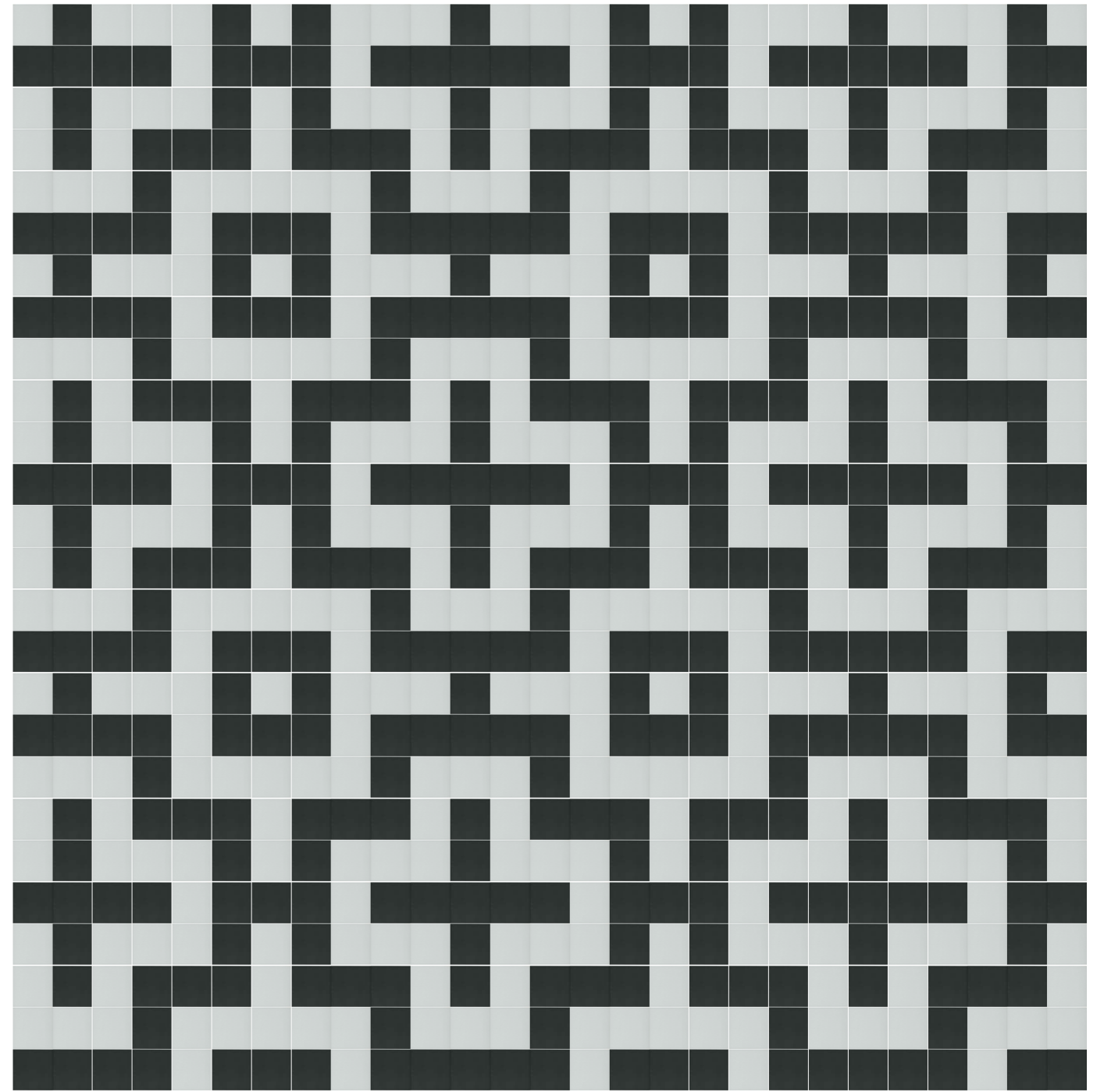
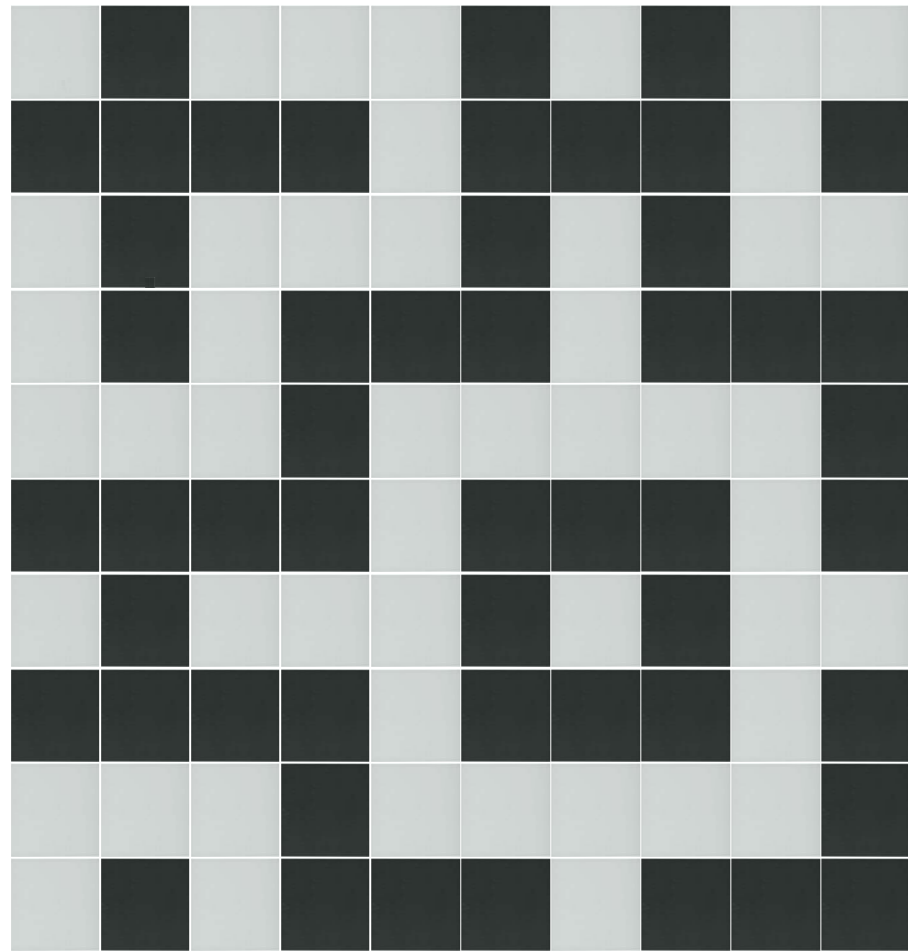
| LAY PATTERN 005 / 2



| LAY PATTERN 00 6



| LAY PATTERN 007



BRUXELLES



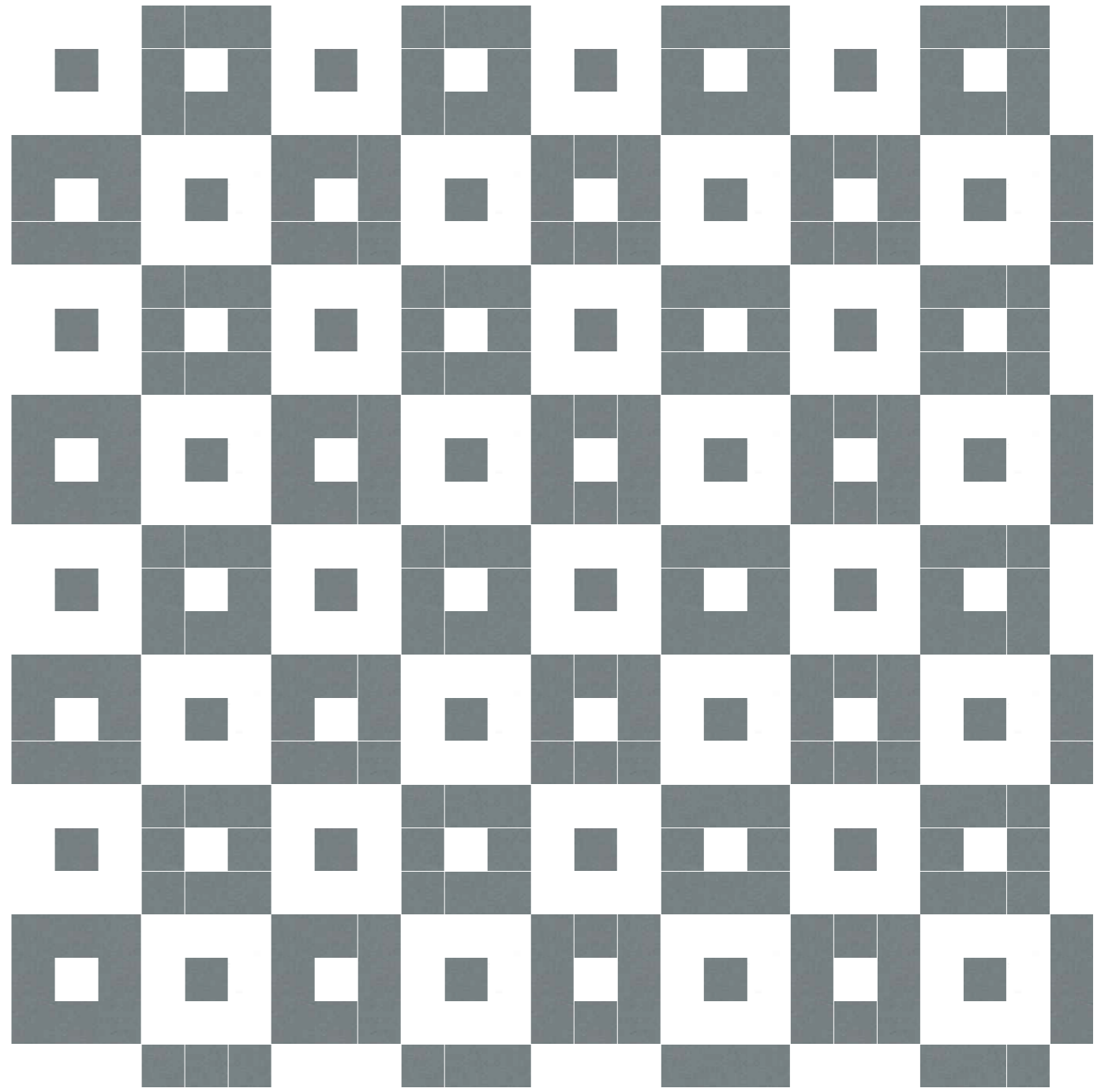
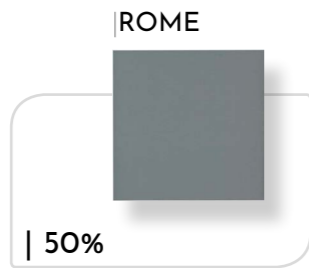
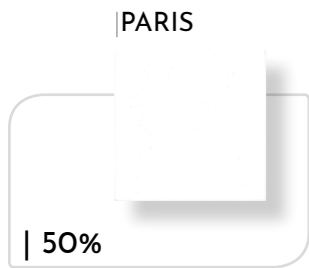
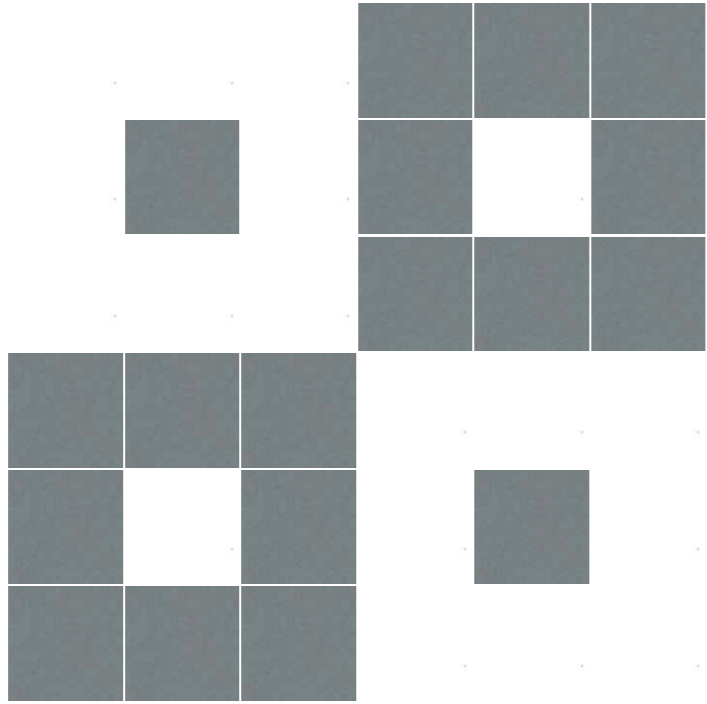
| 4%

PALERMO

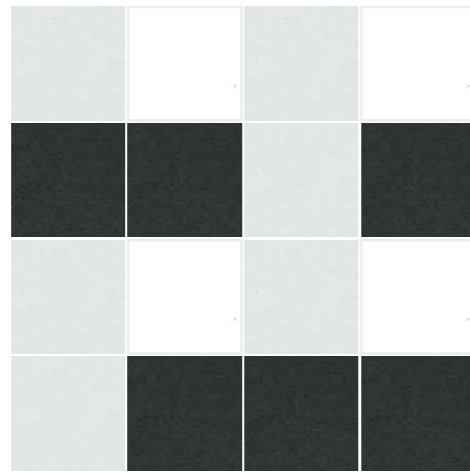


| 52%

| LAY PATTERN 008



| LAY PATTERN 009



PARIS

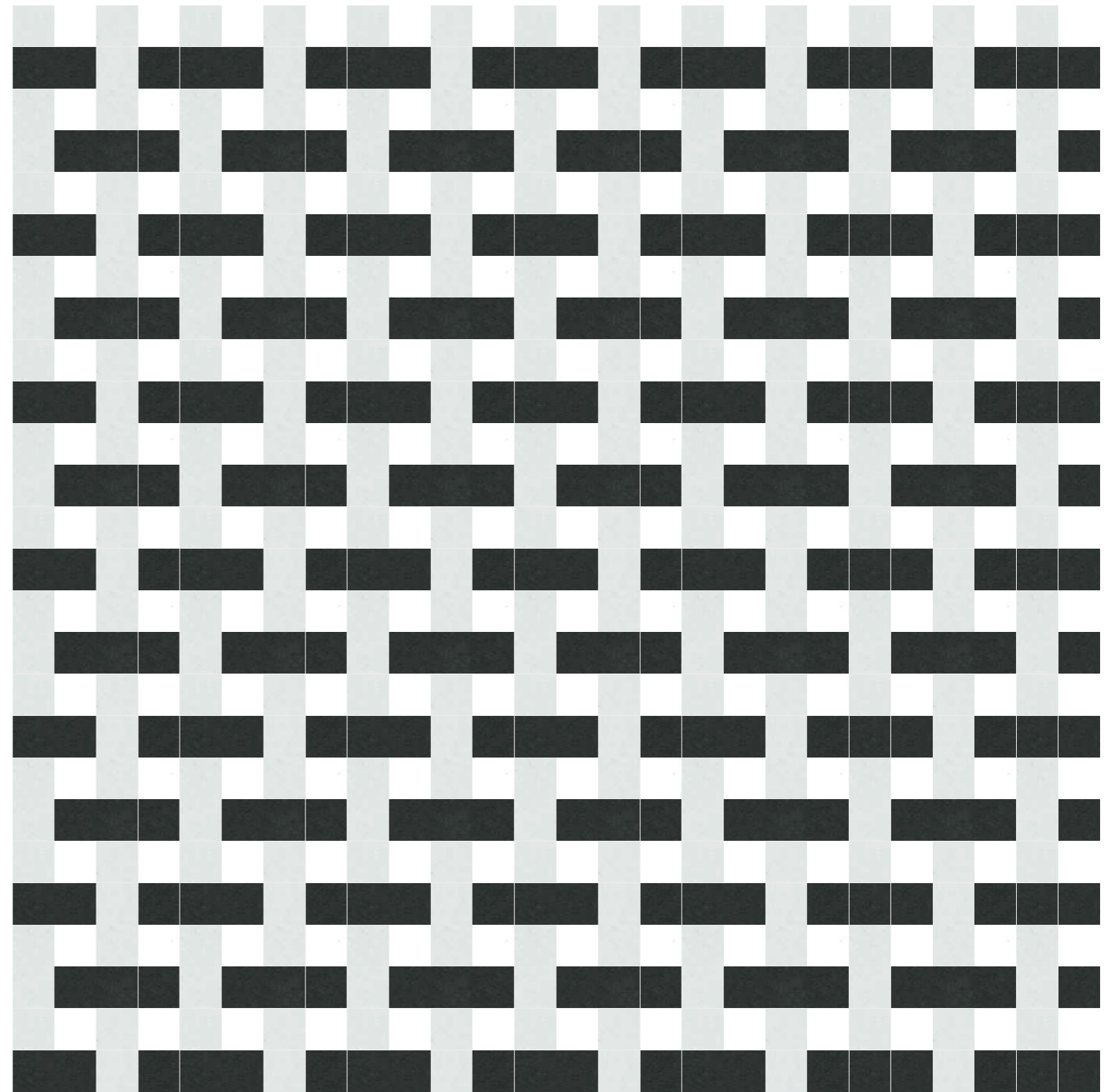
VALENCIA

PALERMO

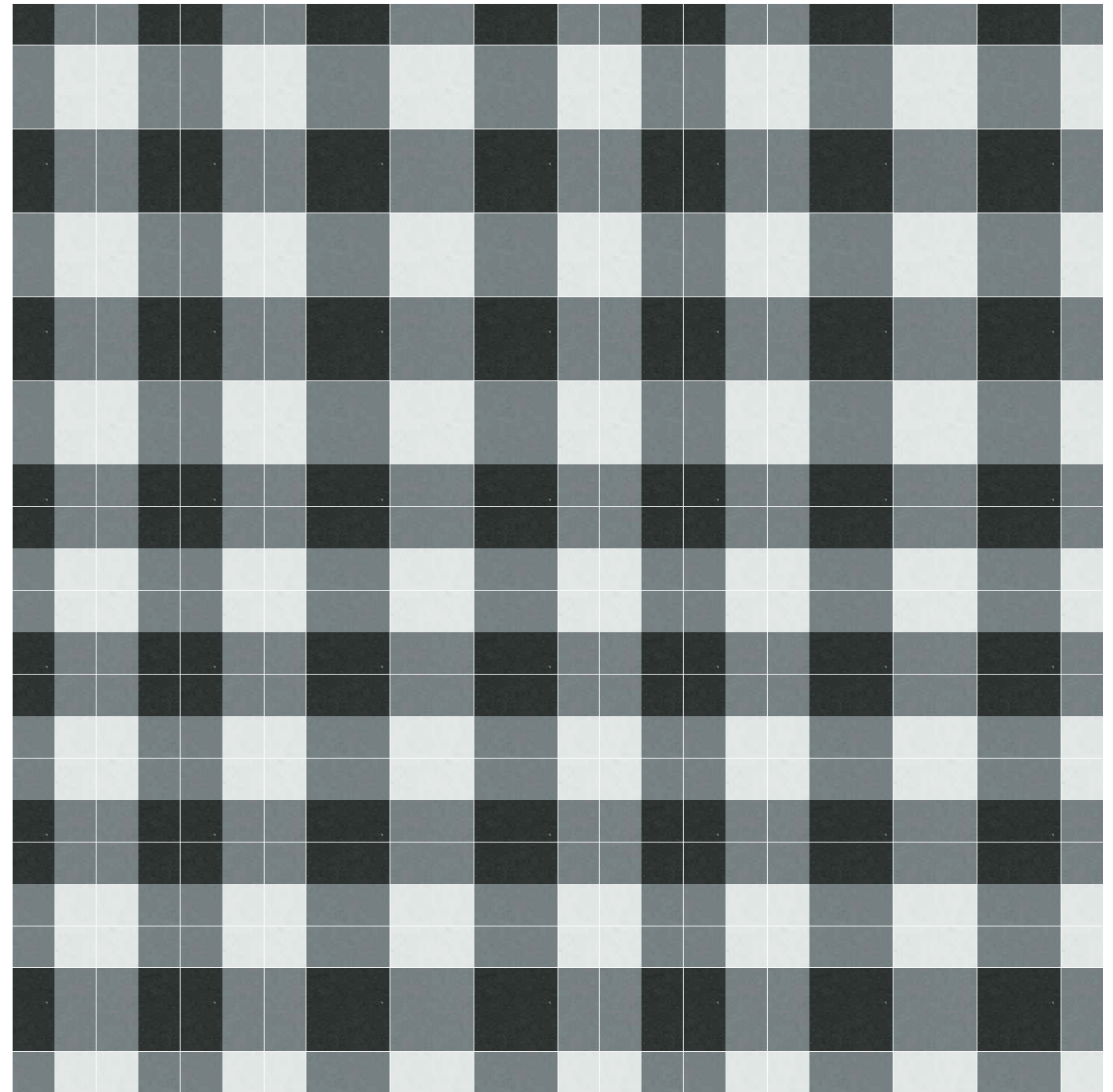
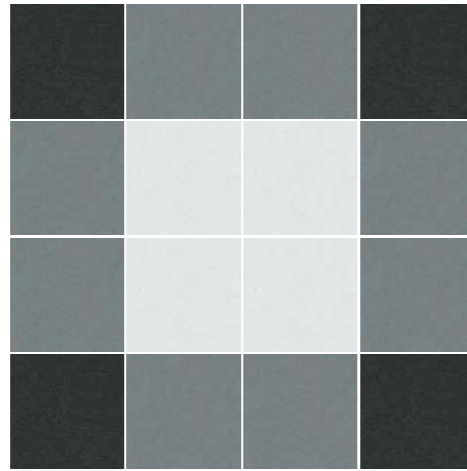
| 25%

| 37.5%

| 37.5%



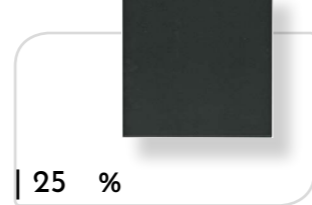
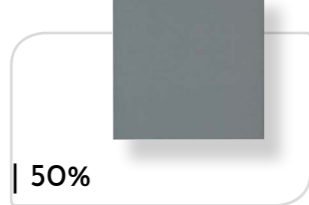
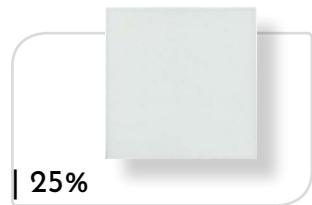
| LAY PATTERN 010



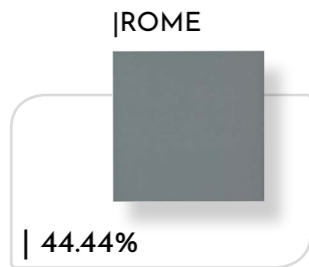
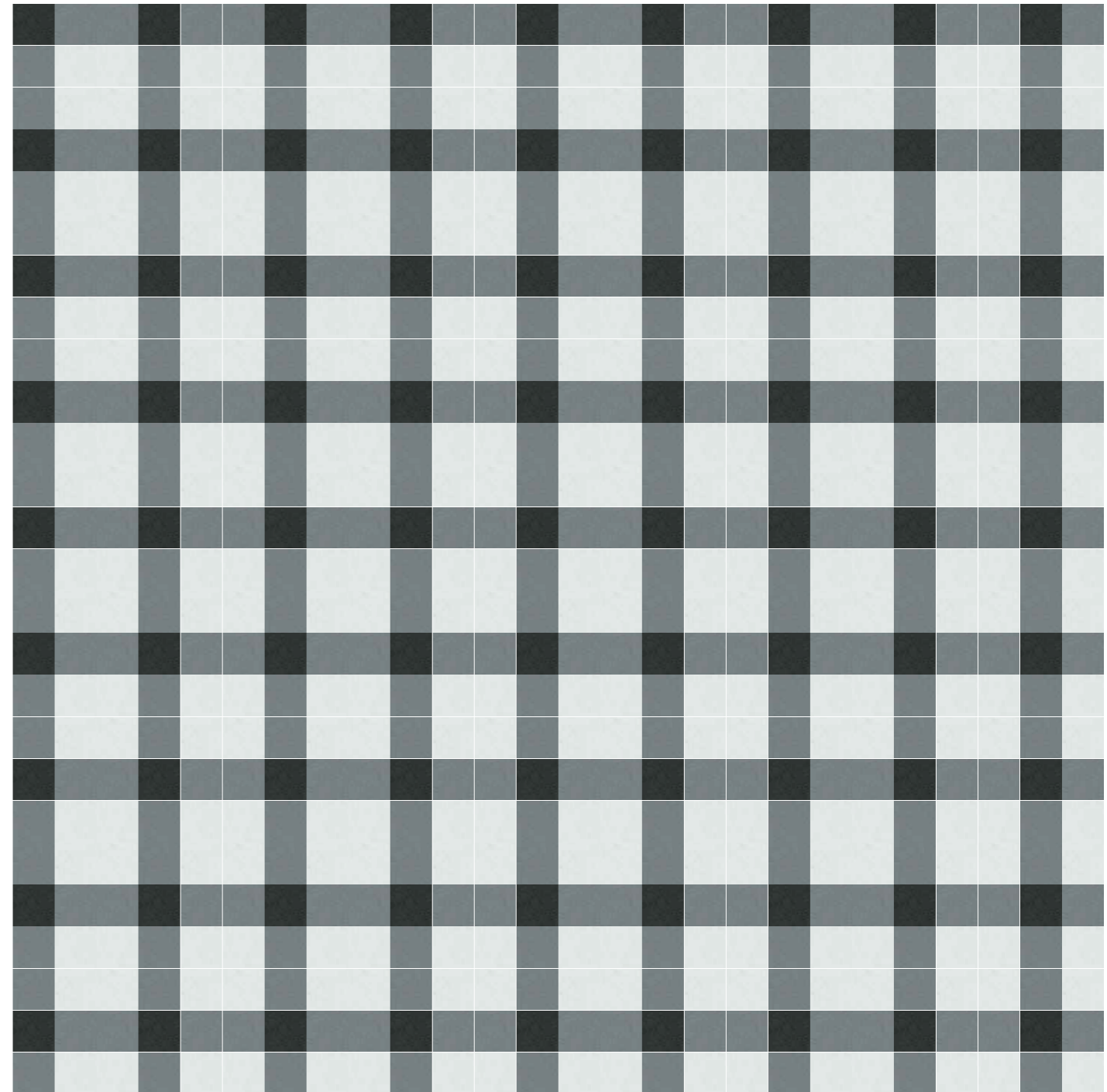
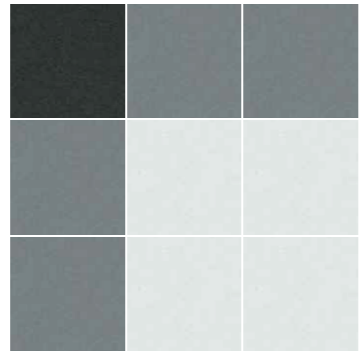
| BRUXELLES

| ROME

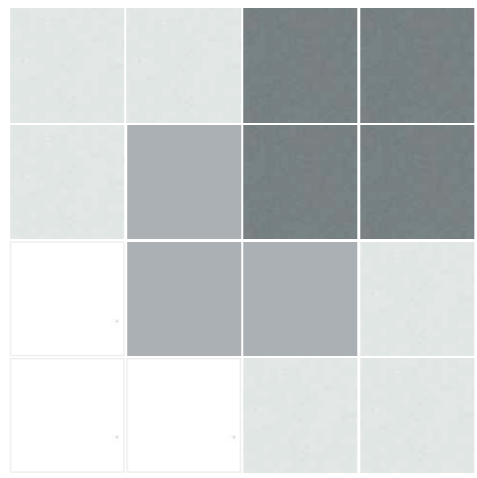
| PALERMO




| LAY PATTERN 011




| LAY PATTERN 012




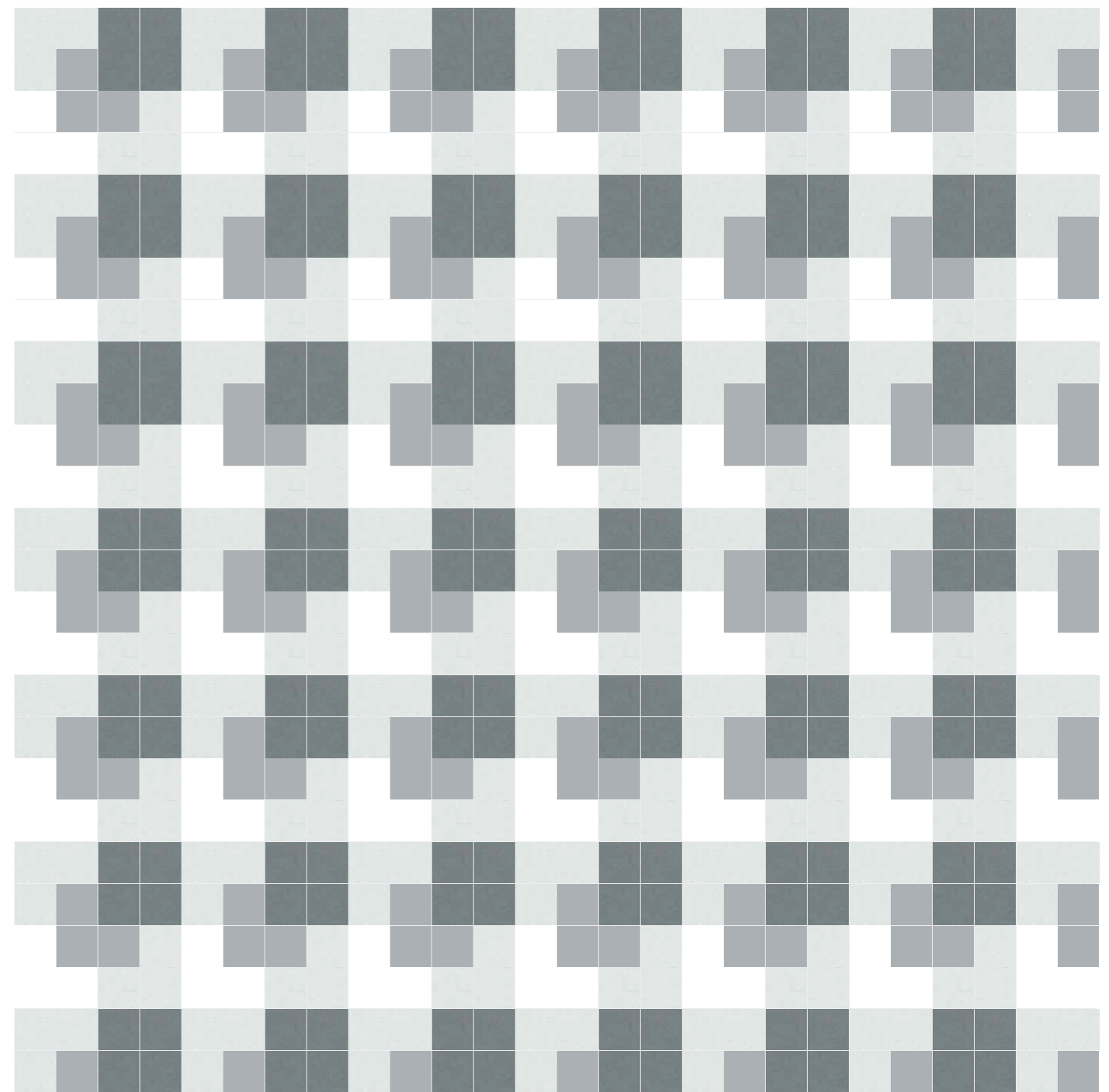
|PARIS

| 18.75%

|VALENCIA

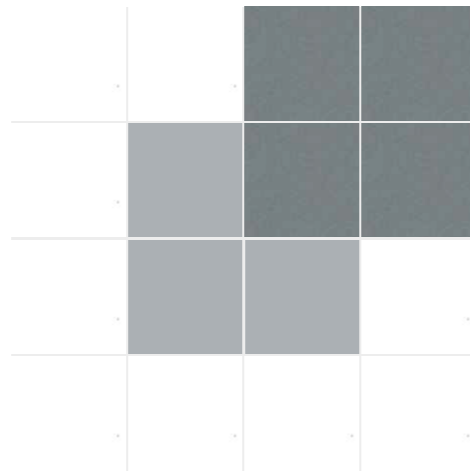
| 37.50%

|MADRID

| 18.75%

|ROME

| 25%



| LAY PATTERN 013



|PARIS

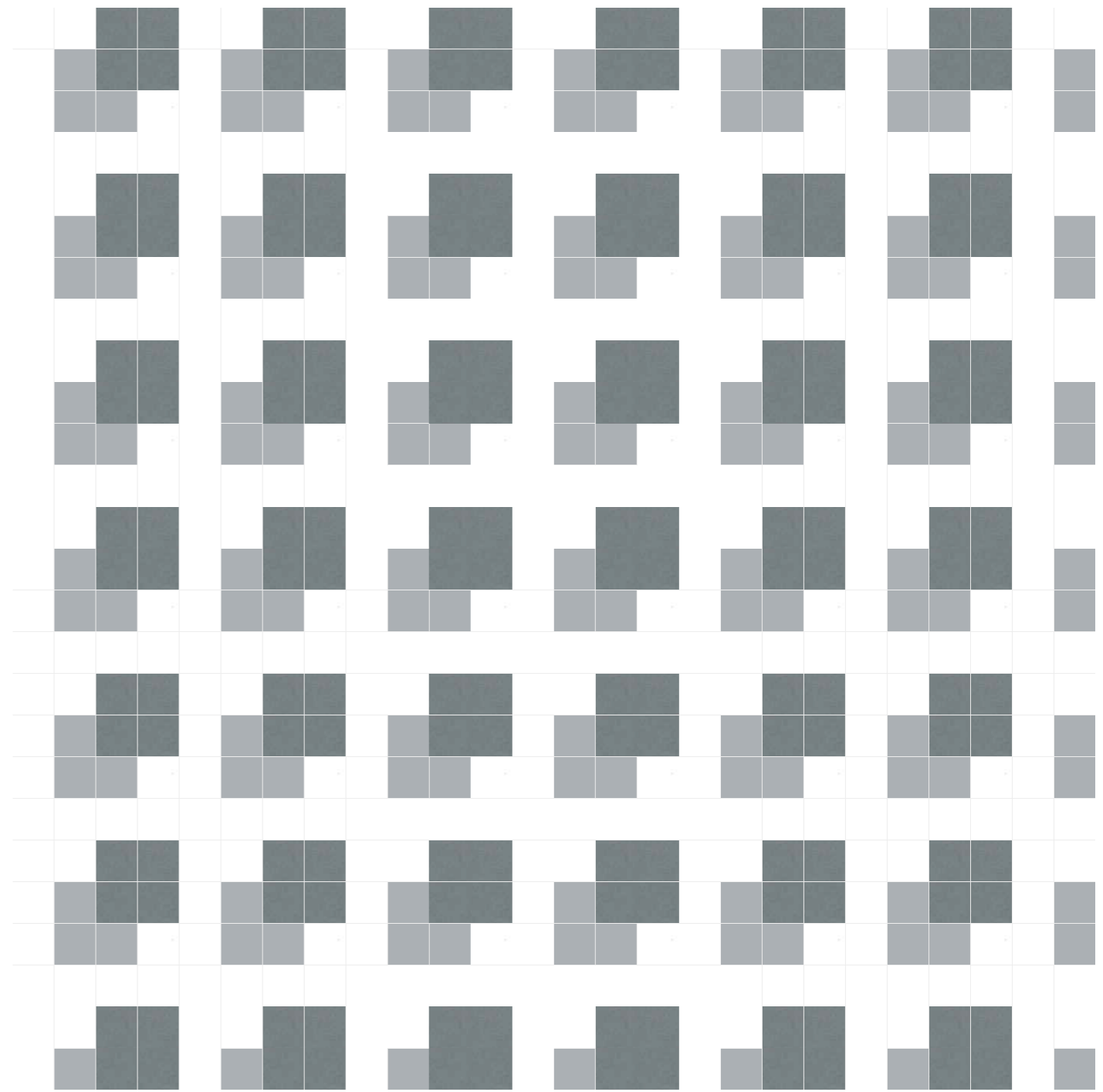
| 56.25%

|MADRID

| 18.75%

|ROME

| 25%



| LAY PATTERN 014



|PARIS



| 18.75%

|BRUXELLES



| 43.75%

|MADRID



| 6.25%

|ROME



| 31.25%

